

# Housing is Healthcare

Housing Coordinating Team

December 4, 2019

Cheryl Cohen  
Department of Commerce  
Montana Housing  
Operations Manager

Traci Clark  
Department of Public Health & Human Services  
Senior Long-Term Care Division  
Medicaid Reform Initiative Specialist

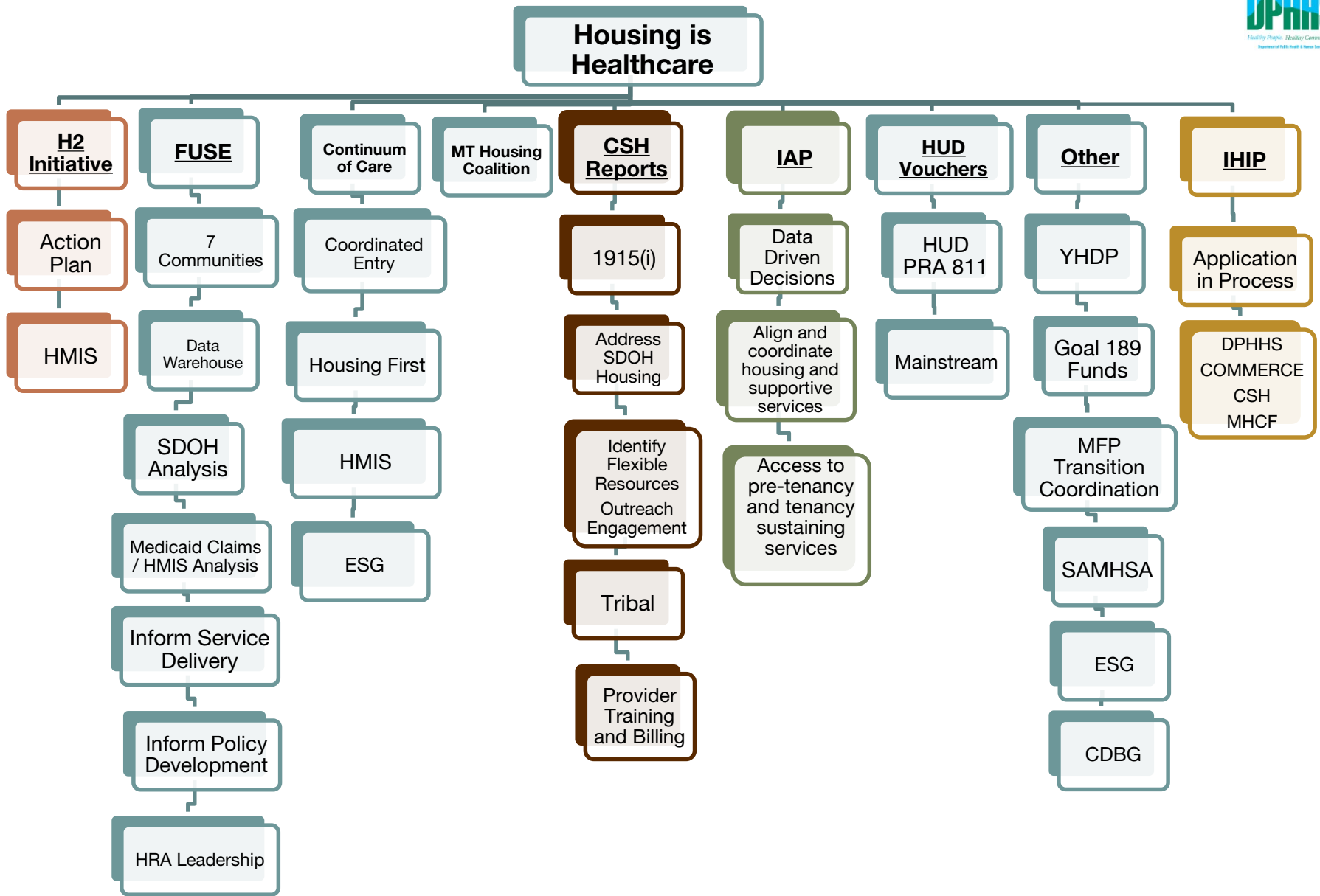
Safe and affordable housing is an essential component of improved health and reduced utilization of costly health care services.

A disproportionate portion of states' Medicaid budgets are used for a small segment of high-need, high-cost enrollees with complex health and social needs.

Centers for Medicare & Medicaid Services (CMS) provides states guidance regarding coverage for housing-related activities and services to maximize payment for services through Medicaid.

States are considering ways to maximize Medicaid to reimburse for supportive housing services which include housing transition services, pre-tenancy and tenancy sustaining services, and care coordination services to reduce costs and improve health outcomes.

**Montana is coming together to examine the possibilities.**



# H2 Action Plan

## H2 Action Plan Goals

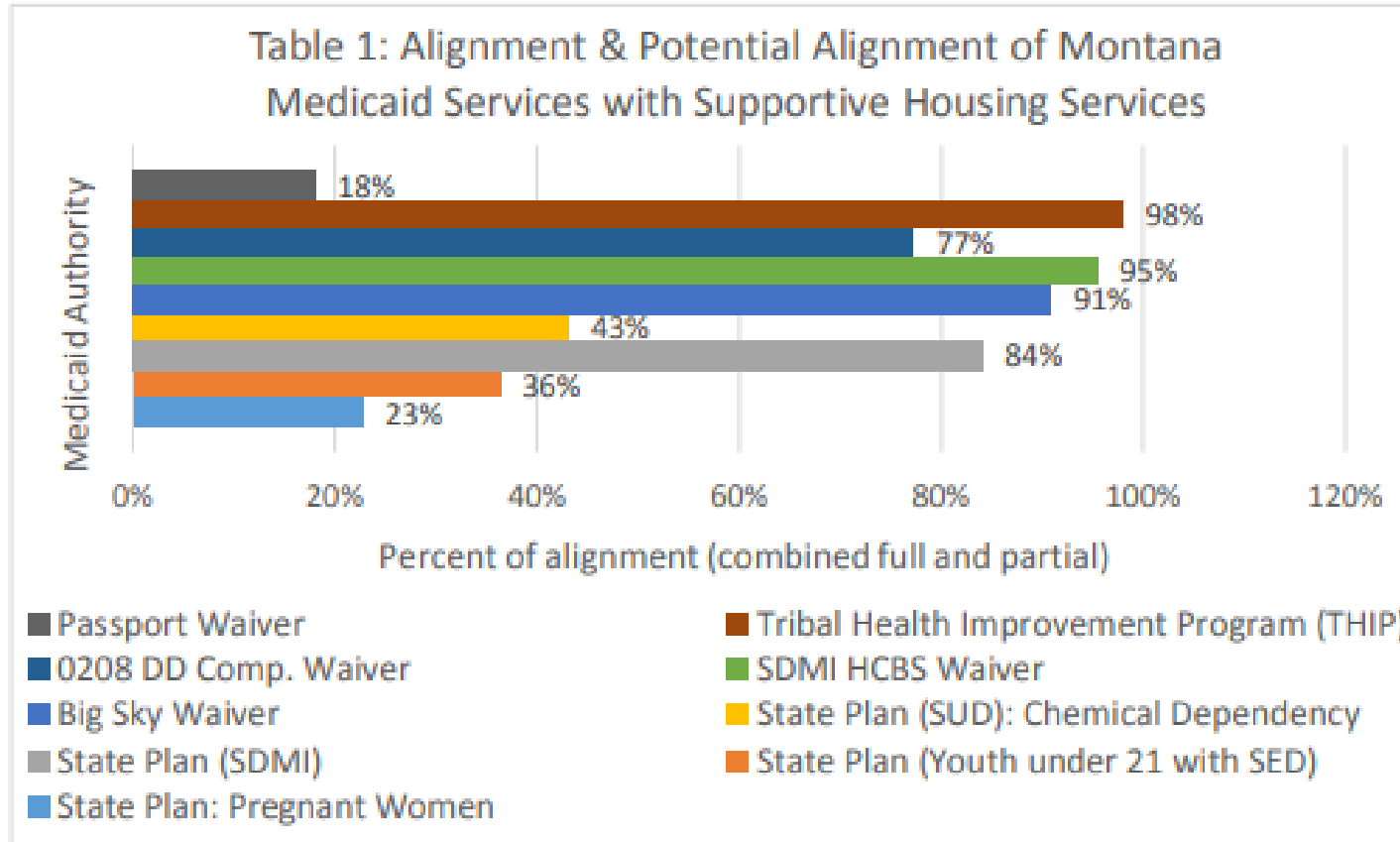
- Develop data-driven service interventions
- Enhance systems coordination to facilitate meaningful access to housing, health care, and other support services and treatment
- Maximize use of Medicaid and other existing resources to support housing and health care access, retention, and stability

# CSH Crosswalk

## Crosswalk Recommendations

- Define and cover supportive housing services using CMS guidelines for 1915(i)
- Examine program standards to address social determinants of health
- Ensure Tribal use of Medicaid benefits
- Build capacity in Medicaid to support the integration of supportive housing services
- Build capacity in provider network  
<https://mthcf.org/resources/>

# CSH Crosswalk



# Medicaid Innovation Accelerator Program (IAP)

- Increase state adoption of individual tenancy sustaining services to assist Medicaid beneficiaries
- Expand housing development opportunities for Medicaid community-based LTSS beneficiaries through facilitation of partnerships with housing agencies
- Increase state adoption of strategies that tie together quality, cost, and outcomes in support of community-based services LTSS programs

# Medicaid Innovation Accelerator Program (IAP)

- Aligning policies across Medicaid and housing systems to improve coordination and collaboration
- Implementing strategies that address identified gaps in housing and services for the state's target population(s)
- Applying strategies for data-driven targeting of new housing and service opportunities
- Engaging private and public stakeholders such as developers, landlords, local housing agencies, managed care organizations, HUD Continua of Care, and service providers to help implement and sustain housing-related services and supports



# Montana Driver Diagram

AIM: Increase by \_\_% the number of Medicaid eligible Montanans living at home with the supportive services they need to thrive while reducing homelessness related Medicaid costs by \_\_% by 2022

## PRIMARY DRIVERS:

- **Improve capacity for data driven decision making**
- **Increase alignment of housing and supportive services**
- **Increase access to housing and supportive services (pre-tenancy and tenancy sustaining)**

# Montana Driver Diagram

## **SECONDARY DRIVERS (DATA):**

- Identify data elements needed at local and state level
- Map existing sources of data
- Develop requirements and framework for data driven decision making

## **SECONDARY DRIVERS (ALIGNMENT):**

- Develop and enhance current cross sector education programs
- Develop approach to identify target populations
- Promote / enhance braided service funding strategies
- Develop and implement stakeholder Communications Strategy

## **SECONDARY DRIVERS (ACCESS):**

- Develop strategies for increasing housing capacity
- Support community resource development with FUSE communities
- Develop approach to incentivize EBP's (risk mitigation, harm reduction)
- Maximize opportunities to increase funding for housing
- Coordination and alignment with Tribal PHAs and Tribal leadership

# Interdepartmental Housing Integration Project (IHIP)

- Connect efforts between DPHHS and Commerce Housing Division (Montana Housing) that continue engagement, coordination, and convening support to accomplish the goals identified in the IAP workplan and Montana Driver Diagram
- Allow for enhanced technical assistance, research and project support for the goals identified in IAP and the CSH Crosswalk Report and Business Case (2019).

# Interdepartmental Housing Integration Project (IHIP)

- Develop other cross-department projects that work to clarify and inventory definitions and current program analysis regarding supportive housing projects and service integration
- Data system development around data coordination, process implementation and support between Medicaid, Housing, HMIS, and local FUSE initiatives
- Draft potential Medicaid State Plan Amendment or demonstration waiver

# Audience Feedback

- What is the #1 challenge you, your organization or your clients are facing with respect to intersection of housing and healthcare needs?
- What additional education or training is needed?
- Who do we need to bring to the table?
- Other feedback?

# QUESTIONS?

Thank you!

Traci Clark [trclark@mt.gov](mailto:trclark@mt.gov)  
Medicaid Reform Initiative Spec. 406.444.7782

Cheryl Cohen [cheryl.cohen@mt.gov](mailto:cheryl.cohen@mt.gov)  
Operations Manager 406.841.2826